

Little-Susanna 2,0 x 5,2

Technical information

Sizes:

Width	2000 mm
Length	5200 mm
Height of the structure	386 mm
Floating depth	141 mm
Freeboard	245 mm
Weight	339 kg

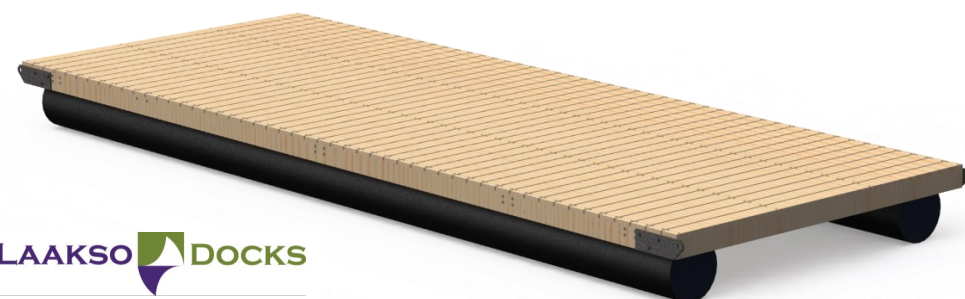
Carrying capacity:

Total carrying capacity	705 kg = 67,8 kg / m ²
Carrying capacity on one edge	214 kg
The real carrying capacity	20,6 kg/m ²

Tilting of the dock:

Tilting with max loading on one side	7 degree
--------------------------------------	----------

Qualities of the dock can be changed depending of the equipments.



PRODUCT CARD

Laakson Laiturit Oy
 Liekolankatu 11
 38200 Sastamala
 Finland

Tel: +358 3 5141 680
 Fax: +358 3 5141 670
 info@laaksonlaiturit.fi
 www.laaksonlaiturit.fi